

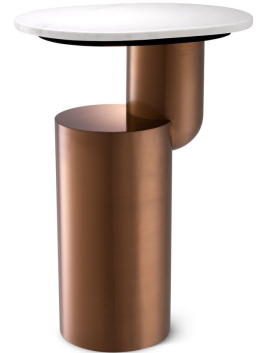


EICHHOLTZ

EST. 1992

SPECIFICATION SHEET

Item no.	113804
Item description	Side Table Tosca brushed copper finish Brushed copper finish white marble Marble is a natural material, each piece differs in color and veining
Suitable for	Indoor use/dry locations only
Net weight (kg)	21.75
Net weight (lbs)	47.94



DIMENSIONS

Dimensions (cm)	L. 45 W. 35 H. 62 cm
Dimensions (inch)	L. 17.72" W. 13.78" H. 24.41"

MATERIALS

113804A	Side Table Tosca brushed copper finish - Stand Stainless steel
Stainless steel grade	SAE 201
113804B	Side Table Tosca brushed copper finish - Top Marble Plywood

SPECIFICATIONS

Assembly required?	This product requires assembly
Maximum weight load (kg)	200
Maximum weight load (lbs)	440.92

LOGISTIC INFORMATION

113804A	Side Table Tosca brushed copper finish - Stand 1 pc(s)
Carton length (m)	0.38
Carton width (m)	0.38
Carton height (m)	0.63
Carton cubage (m)	0.09097
Gross weight (kg)	16.4
HS code EU	94039910
Carton length (inch)	14.96
Carton width (inch)	14.96
Carton height (inch)	24.8
Carton cubage (ft)	3.21258
Gross weight (lbs)	36.15
HS code USA	9403999045
Country of origin	China
113804B	Side Table Tosca brushed copper finish - Top 1 pc(s)
Carton length (m)	0.52
Carton width (m)	0.42
Carton height (m)	0.08
Carton cubage (m)	0.01747



E I C H H O L T Z

EST. 1992

SPECIFICATION SHEET

Gross weight (kg)	8
HS code EU	94039910
Carton length (inch)	20.47
Carton width (inch)	16.54
Carton height (inch)	3.15
Carton cubage (ft)	0.61695
Gross weight (lbs)	17.63
HS code USA	9403999045
Country of origin	China